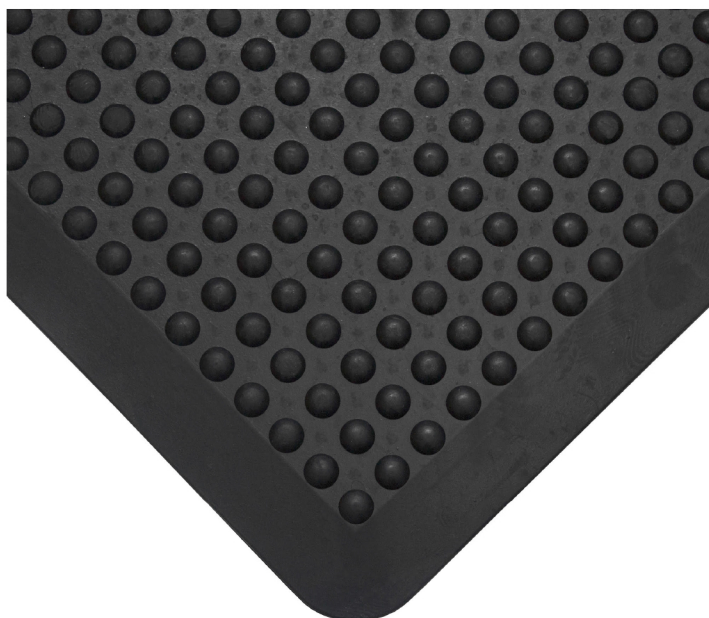


## Килимче Соба индустриално 1200x900x14 мм

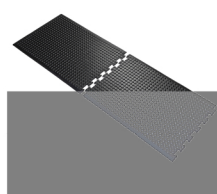
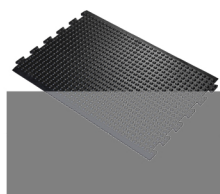
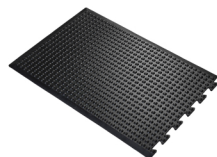
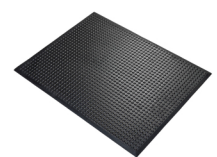
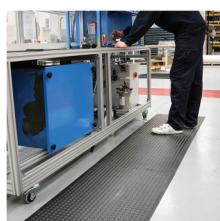
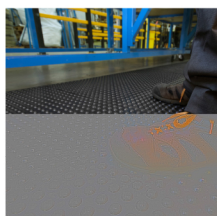
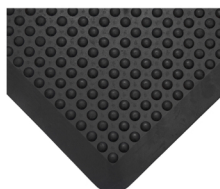



### Bubblemat

Smart anti-fatigue mat with a distinctive bubbled surface



- Raised bubble patterned surface stimulates feet and legs to aid circulation.
- Underfoot cushioning also makes prolonged occupational standing more comfortable.
- A choice of materials depending on the demands of the environment (dry use only).
- Complete mats suitable for workstations and interlocking sections available for longer production lines.



Продукт: [Килимче Соба индустриално 1200x900x14 мм](#)

Категория: [Индустриални настилки](#)

Бранд: [Coba](#)

Категория бранд: [Килимче Соба](#)

## Parts

Part Number	Size	Colour	Weight (kg)
BF010001	0.6 m x 0.9 m	Black	6.35
BF010002	0.9 m x 1.2 m	Black	10.5
BF010003	0.6 m x 0.9 m	Black	6.35
BF010004	0.6 m x 0.9 m	Black	6.35

## Technical Specifications

<b>Material</b>	Natural rubber
<b>Surface Finish</b>	Bubble
<b>Product Height</b>	14 mm
<b>Product Weight</b>	10 kg
<b>Min. Operating Temperature</b>	-20°C
<b>Max. Operating Temperature</b>	+50°C
<b>Resistance to Chemicals</b>	Not resistant to fat and mineral oil
<b>Environmental Resistance</b>	Suitable for predominantly dry environments
<b>UV Resistance</b>	Yes
<b>Typical Applications</b>	General industrial
<b>Installation Method</b>	Loose lay interlocking mats
<b>Cleaning Method</b>	Use a high pressure hose (not exceeding 60psi) to remove the dirt and debris on the mats. For best results use a mild detergent (pH 4.0-9.0) to clean the mats. Do not use steam or degreasers or caustic chemicals. Do not mechanically scrub the mats
<b>COO (Country of Origin)</b>	LK
<b>Tensile Strength</b>	3 MPa
<b>Elongation</b>	250%
<b>Application Temperature</b>	-30°C to 50°C
<b>Manufacturing process</b>	Compression moulding